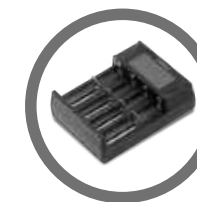




Primary Batteries



Specialty Batteries



Battery Chargers



Mobile Power



Portable Lighting



Over 130 Years of Electric Innovation

For more than a century, Westinghouse has consistently provided innovative, reliable, high-quality products and customer service. It's a combination of groundbreaking technology and rock-solid dependability that's made us one of the world's most trusted brands.

From outdoor portable generators that provide power for your home, work and play moments, to high-definition TVs that are setting new standards for performance, we're constantly developing advanced products, rigorously testing them to make sure they work time after time, day after day.

When you see the W, you know you're getting a product packed with features that make your life easier, while still being easy to use. A product that has all the latest thinking, while providing years of value.

Innovation You Can Be Sure Of.
From a company that always puts you first.



Contents

- Primary Batteries** 04
 - Ultra lithium
 - Dynamo Alkaline
 - Super Heavy Duty
- Specialty Batteries** 10
 - 9V Lithium
 - Photo Lithium
 - Button Cell Batteries
 - Hearing Aid Zinc Air
- Rechargeable Batteries** 15
 - 18650 Batteries
 - Ni-MH Rechargeable Batteries
 - Rechargeable Lithium Batteries
- Battery Chargers** 20
- Mobile Power** 22
- Portable Lighting** 24
 - Work Lights
 - Flashlights
 - Sensor Lights
 - Pen Lights
 - Head Lights
 - Search Lights



Ultra Lithium

Westinghouse Ultra Lithium batteries are not only capable of giving great performance in extreme temperatures (-40°F to 140°F or -40°C to 60°C), they are also completely leak resistant and their weight is lighter than normal alkaline batteries. They offer seven times better performance than alkaline batteries.



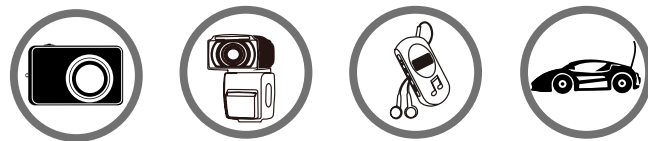
Features

- Last 7 times longer than alkaline batteries*
- 33% lighter in weight than alkaline batteries
- Lasting shelf life and leak-proof quality of up to 20 years
- Superb performance in extreme temperatures (-40°F to 140°F or -40°C to 60°C)

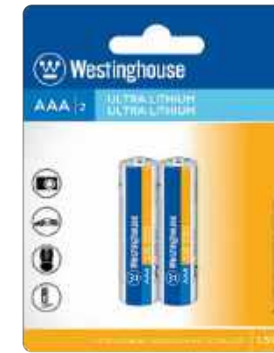
* Based on lab tests

Main Uses

Digital Camera, Camera Flash, Music Players, Competition Toy Cars, and more



AAA Packs



Model: FR03-BP2
Packing: 2PC/PK
Carton: 384 PKS



Model: FR03-BP4
Packing: 4PC/PK
Carton: 192 PKS



Model: FR03-BP8
Packing: 8PC/PK
Carton: 96 PKS

AA Packs



Model: FR6-BP2
Packing: 2PC/PK
Carton: 192 PKS



Model: FR6-BP4
Packing: 4PC/PK
Carton: 96 PKS



Model: FR6-BP8
Packing: 8PC/PK
Carton: 48 PKS



Dynamo Alkaline

The Westinghouse Dynamo Alkaline batteries are inspired by the original Westinghouse Dynamo and offers the maximum possible capacity of single-use batteries. Offering long-lasting power and a shelf life of 10 years, the Westinghouse Dynamo Alkaline battery delivers a stable current, making it ideal for high drain devices.



Features

- Lasting power for high-drain devices
- Shelf life lasting up to 10 years*
- Mercury, cadmium and lead free

*When not in use; based on lab tests; for AA and AAA size.

Main Uses

Cameras, Wireless Mouse & Keyboard, Game Controller, Shavers, Toys, and more



AAA Packs



Model: LR03-BP2
Packing: 2PCS/PK
Carton: 384 PKS



Model: LR03-BP4
Packing: 4PCS/PK
Carton: 192 PKS



Model: LR03-BP8
Packing: 8PCS/PK
Carton: 96 PKS



Model: LR03-DBP24
Packing: 24PCS/PK
Carton: 24 PKS



Model: LR03-PBH24
Packing: 24PCS/PK
Carton: 24 PKS



Model: LR03-PB24
Packing: 24PCS/PK
Carton: 24 PKS



Model: LR03-AAAPB48
Packing: 48PCS/PK
Carton: 24 PKS



Model: LR03-SP48
Packing: 48PCS/PK
Carton: 24 PKS

AA Packs



Model: LR6-BP2
Packing: 2PCS/PK
Carton: 192 PKS



Model: LR6-BP4
Packing: 4PCS/PK
Carton: 96 PKS



Model: LR6-BP8
Packing: 8PCS/PK
Carton: 48 PKS



Model: LR6-DBP12
Packing: 12PCS/PK
Carton: 24 PKS



Model: LR6-PBH24
Packing: 24PCS/PK
Carton: 12 PKS



Model: LR6-PB24
Packing: 24PCS/PK
Carton: 12 PKS



Model: LR6-AAPB48
Packing: 48PCS/PK
Carton: 12 PKS



Model: LR6-SP48
Packing: 48PCS/PK
Carton: 12 PKS

C Packs



Model: LR14-BP2
Packing: 2PCS/PK
Carton: 96 PKS



Model: LR14-PB6
Packing: 6PCS/PK
Carton: 24 PKS



Model: LR20-BP2
Packing: 2PCS/PK
Carton: 48 PKS



Model: LR20-PB6
Packing: 6PCS/PK
Carton: 12 PKS

9V Packs



Model: 6LR61-BP1
Packing: 1PC/PK
Carton: 96 PKS



Model: 6LR61-PB6
Packing: 6PCS/PK
Carton: 24 PKS



Super Heavy Duty

The Westinghouse Super Heavy Duty batteries provide you with cost-effective power for a wide range of low drain devices. It is the ideal choice of battery for devices such as LED flashlights, radio cassettes players, recorders, remote controls and clocks.



Features

- Reliable and cost-effective power
- Mercury and cadmium free

Main Uses

Clocks, Flashlights, Remote Controls, Recorders, Transistor Radios, and more



AAA Packs



Model: R03P-BP4
Packing: 4PCS/PK
Carton: 288 PKS



Model: R03P-BP8
Packing: 8PCS/PK
Carton: 144 PKS



Model: R03P-BP16
Packing: 16PCS/PK
Carton: 72 PKS



Model: R03P-BP24
Packing: 24PCS/PK
Carton: 48 PKS



Model: R03P-PBH24
Packing: 24PCS/PK
Carton: 48 PKS



Model: R03-SP48
Packing: 48PCS/PK
Carton: 24 PKS



Model: R03P-PB24
Packing: 24PCS/PK
Carton: 48 PKS

AA Packs



Model: R6P-BP4
Packing: 4PCS/PK
Carton: 144 PKS



Model: R6P-BP8
Packing: 8PCS/PK
Carton: 72 PKS



Model: R6P-BP16
Packing: 16PCS/PK
Carton: 48 PKS



Model: R6P-BP24
Packing: 24PCS/PK
Carton: 36 PKS



Model: R6P-PBH24
Packing: 24PCS/PK
Carton: 24 PKS



Model: R6-SP48
Packing: 48PCS/PK
Carton: 12 PKS



Model: R6P-PB24
Packing: 24PCS/PK
Carton: 24 PKS

C Packs



Model: R14P-BP2
Packing: 2PCS/PK
Carton: 144 PKS



Model: R14P-PB4
Packing: 4PCS/PK
Carton: 48 PKS



Model: R20P-BP2
Packing: 2PCS/PK
Carton: 72 PKS



Model: R20P-PB4
Packing: 4PCS/PK
Carton: 24 PKS

9V Packs



Model: 6F22-BP1
Packing: 1PC/PK
Carton: 240 PKS



Model: 6F22-BP2
Packing: 2PCS/PK
Carton: 144 PKS



Model: 6F22-PB6
Packing: 6PCS/PK
Carton: 48 PKS



9V Lithium

The Westinghouse 9V Lithium Battery out performs other 9V batteries with its high energy density, stable voltage discharge, and shelf life of up to 10 years. Ideal for 9V devices such as smoke detectors, wireless microphones, wireless transmitters, and more.



Features

- Delivers high energy performance
- Leak resistant
- 10 year shelf life*
- Operating temperature ranges from -20°C to +55°C

*When not in use; based on lab tests

Main Uses

Smoke Detectors, Wireless Microphone, Wireless Transmitters, Universal Meter, Medical Equipment, Gas Alarms, and more



Model: CR9V-BP1
Packing: 1PC/PK
Carton: 144 PKS

Photo Lithium

The Westinghouse Photo Lithium batteries are manufactured with high-quality lithium technology for longer-lasting performance and outstanding high-current discharge performance. Having a shelf life of up to 10 years, the Westinghouse Photo Lithium Battery is a great choice for digital and analog cameras.



Features

- Outstanding high-discharge performance
- Leak resistant
- Shelf life lasting up to 10 years*
- Operating temperature ranges -20°C to +55°C

*When not in use; based on lab tests

Main Uses

Cameras, Camera Flashes, Medical Equipments, LED Flashlights, Night Vision Goggles, Sensor Taps, and more



Model: CR123A-BP1
Packing: 1PC/PK
Carton: 144 PKS



Model: CR2-BP1
Packing: 1PC/PK
Carton: 144 PKS



Button Cell

Westinghouse button cell batteries are mercury and cadmium free and provide reliable energy for your devices. Available in lithium, alkaline and zinc air.

0% Lead Mercury Cadmium

Green Energy

Alkaline 1.5V



Features

- Delivers stable output
- Broad range of uses
- Mercury and cadmium free

Main Uses

Calculators, Electronic Toys, Remote Controls, Mini Radios, and more



Model: LR60-BP2
Packing: 2PC/PK
Carton: 960 PKS



Model: LR44-BP2
Packing: 2PC/PK
Carton: 960 PKS

Industrial Classifications

Westinghouse	Camelion	IEC	Energizer	Duracell	Rayovac	Common	Other
LR60	AG1	LR60	164	-	-	364	LR621
LR59	AG2	LR59	196	-	-	396	LR726
LR41	AG3	LR41	192	-	-	392	LR736
LR66	AG4	LR66	177	-	-	377	LR626
LR48	AG5	LR48	193	-	-	393	LR754
LR69	AG6	LR69	171	-	-	371	LR921
LR57	AG7	LR57	195	-	-	395	LR926
LR55	AG8	LR55	191	-	-	391	LR1120
LR45	AG9	LR45	194	-	-	394	LR936
LR54	AG10	LR54	189	LR54	RW89	389	LR1130
LR58	AG11	LR58	162	-	-	362	LR721
LR43	AG12	LR43	186	LR43	RW84	386	LR1142
LR44	AG13	LR44	A76	LR44	RW82	357	LR1154

Lithium Coin 3V



Features

- Delivers high energy performance
- Shelf life lasting up to 5 years*
- Operating temperature range from -20°C to +55°C

*When not in use; based on lab tests

Main Uses

Car Keys, Computers, Electronic Scales, Calculators, Thermometers, and more



Model: CR2016-BP1
Packing: 1PC/PK
Carton: 480 PKS



Model: CR2032-BP5
Packing: 5PC/PK
Carton: 360 PKS

Item	Packaging WxHxD (mm)	Inner Box LxWxH (mm)	Shipping Carton LxWxH (CM)	G.W.(KG)	Volume(CBM)
CR2450-BP1	56*92*6 1 PC/Blister	95*82*58 24 Packs	31.5*21*19 480 Packs	4.93	0.0126
CR2032-BP1	56*92*6 1 PC/Blister	95*82*58 24 Packs	31.5*21*19 480 Packs	3.39	0.0126
CR2025-BP1	56*92*6 1 PC/Blister	95*82*58 24 Packs	31.5*21*19 480 Packs	3.15	0.0126
CR2016-BP1	56*92*6 1 PC/Blister	95*82*58 24 Packs	31.5*21*19 480 Packs	2.81	0.0126
CR2477-BP1	56*92*6 1 PC/Blister	100*55*58 10 Packs	32*24*25.8 480 Packs	6.95	0.0198
CR2430-BP1	56*92*6 1 PC/Blister	95*82*58 24 Packs	31.5*21*19 480 Packs	4.07	0.0126
CR2330-BP1	56*92*6 1 PC/Blister	95*82*58 24 Packs	31.5*21*19 480 Packs	4.30	0.0126
CR2032-BP5	55*190 5 PC/Blister	190*30*57 10 Packs	29.5*22*25 360 Packs	8.68	0.0162
CR2025-BP5	55*190 5 PC/Blister	190*30*57 10 Packs	29.5*22*25 360 Packs	7.58	0.0162
CR2016-BP5	55*190 5 PC/Blister	190*30*57 10 Packs	29.5*22*25 360 Packs	6.70	0.0162
CR1632-BP5	55*190 5 PC/Blister	190*30*57 10 Packs	29.5*22*25 360 Packs	6.70	0.0162
CR1620-BP5	55*190 5 PC/Blister	190*30*57 10 Packs	29.5*22*25 360 Packs	5.44	0.0162
CR1220-BP5	55*190 5 PC/Blister	190*30*57 10 Packs	29.5*22*25 360 Packs	4.54	0.0162



Alkaline 12V



Features

- Long-lasting
- Stable output voltage
- Mercury and cadmium free

Main Uses

Car Keys, Keyless Entry Remotes, Garage Door Remotes, Other Electronic Devices, and more



Model: A23-BP1
Packing: 1PC/PK
Carton: 480 PKS



Model: A27-BP1
Packing: 1PC/PK
Carton: 480 PKS

Lithium-ion Battery

The Westinghouse High Amp Lithium-ion 18650 batteries are specially designed and tested to provide the best possible performance for high drain devices such as power tools that require a higher current output from the battery.

18650
Battery



Features

- Stable continuous discharge rate with a max pulse current of 30A
- 500 recharge cycles
- Passed fire and explosion safety tests

Specifications:

	INR18650P-2500	INR18650P-3000
Composition	Lithium-ion	Lithium-ion
Rated Capacity	2500mAh	3000mAh
Nominal Voltage	3.7V	3.7V
Max Charge Current	2.5A	4A
Max Continuous Discharge Current	20A	15A
Max Pulse Discharge Current	30A 3 second pulse	30A 2 second pluse
Operating Temperature (Surface Temperature)	Charge: 0°C to +45°C	Charge: 0°C to +50°C
	Discharge: -20°C to +60°C	Discharge: -20°C to +75°C
	Storage: -20°C to +45°C	Storage: -20°C to +45°C

Zinc Air For Hearing Aid 1.45V



Features

- Ideal battery for hearing aids
- Long-lasting
- Stable output voltage
- Mercury and cadmium free



Model: A13-BP6
Packing: 6PCS/PK
Carton: 200 PKS



Model: A10-BP6
Packing: 6PCS/PK
Carton: 200 PKS



Model: A675-BP6
Packing: 6PCS/PK
Carton: 200 PKS



Model: A312-BP6
Packing: 6PCS/PK
Carton: 200 PKS



Lithium-Thionyl Chloride Primary Battery

Lithium-thionyl chloride batteries are currently the primary batteries with the highest voltage and energy, longest storage life, and slowest self-discharge rate. These batteries are ideal for electric devices that need a long-term energy source, such as water, heat, and gas meters, backup power source for memory ICs, and more.



Features

- High cell voltage: The battery has an operating voltage of 3.6V, which is considerably higher than any commercially available primary batteries.
- Wide operating temperature range: -55°C (-67°F) to 85°C (185°F).
- Long-lasting lifespan and superior shelf life: The self-discharge rate is extremely low (less than 1% per year at 20°C), which can support long storage periods and a service life of 10-20 years.

Main Uses

- AMR (Automated Meter Reading) Utility Meter (electric, gas, water and heat)
- Wireless Alarms and Security Devices
- Emergency Location Transmitters / Beacons (ELTs, EPIRBs)
- GPS
- Professional Electronics

Specifications:

	ER14250	ER14505	ER26500	ER34615
Rated Capacity	1200mAh	2700mAh	9000mAh	19000 mAh
Nominal Voltage	3.6V	3.6V	3.6V	3.6V
Max Dimensions	φ14.5mm x H 25.5mm	φ14.5mm x H 50.5mm	φ26.2mm x H 50mm	φ34.2mm x H 61.5mm
Max Weight	9g	17g	53g	99g
Standard Discharge	Discharge to 2.0V 0.5mA	Discharge to 2.0V 1mA	Discharge to 2.0V 2mA	Discharge to 2.0V 3mA
Max Constant Discharge Current	20mA	100mA	200mA	200mA
Max Pulse Current	50mA	200mA	400mA	400mA
Ambient Temperature Range	-55°C to +85°C	-55°C to +85°C	-55°C to +85°C	-55°C to +85°C
Storage Life	>10 years	>10 years	>10 years	>10 years

Lithium-iron Phosphate Battery (Rechargeable)

Lithium-Iron Phosphate Batteries are the perfect choice for outdoor solar-powered lighting. The battery offers a longer lifespan, and its wide operating temperature range provides outstanding performance. It's a great source for efficient and sustainable energy when being charged by solar-powered devices.



Features

- More than 1000 charge cycles
- Wide operating temperature range: -10°C to 60°C
- Excellent safety record - the batteries passed all of the following safety tests: being crushed, altitude simulation, short-circuiting, impact, nail picking, and over-discharge

Specifications:

	IFR14430	IFR14500	IFR18500
Rated Capacity	400mAh	500mAh	1000mAh
Nominal Voltage	3.2V	3.2V	3.2V
Charging Time	6 hours (approx.)	6 hours (approx.)	6 hours (approx.)
Max Dimensions	φ14mm x H 43.4mm	φ14mm x H 50.6mm	φ18mm x H 49.9mm
Weight	15g	16.5g	37g
Max Constant Discharge Current	3C ₅ A	3C ₅ A	3C ₅ A
Max Continuous Charge Current	1C ₅ A	1C ₅ A	1C ₅ A
Operation Temperature Range	-10°C to +60°C	-10°C to +60°C	-10°C to +60°C
Cycle life	>1000 times	>1000 times	>1000 times





Ni-MH Rechargeable Battery

The Westinghouse Ni-MH Rechargeable batteries provide high-quality green energy with excellent performance. The MAX Series is ideal for professionals and the PREMIUM Series is perfect for your day-to-day needs.



MAX Series

- Maximum Capacity for a longer usage duration
- Ultra fast current recovery for less waiting time for your camera flash
- Pre-charged & ready-to-use
- Environmentally friendly
- Ideal for professionals
- Series Includes: NH-AA2400
NH-AAA1000

PREMIUM Series

- Premium power to meet your everyday needs
- Holds charge up to 5 years
- Recharge up to 2000 times
- Pre-charged & ready-to-use
- Environmentally friendly
- Series Includes: NH-AA2100
NH-AA1000
NH-AAA800
NH-D2500
NH-C2500
NH-9V200



MAX Pack



Model: NH-AAA1000ARBP2-MAX
Packing: 2PCS/PK
Carton: 192 PKS



Model: NH-AAA1000ARBP4-MAX
Packing: 4PCS/PK
Carton: 96 PKS



Model: NH-AA2400ARBP2-MAX
Packing: 2PCS/PK
Carton: 96 PKS



Model: NH-AA2400ARBP4-MAX
Packing: 4PCS/PK
Carton: 48 PKS

PREMIUM Pack



Model: NH-AAA800ARBP2
Packing: 2PCS/PK
Carton: 192 PKS



Model: NH-AAA800ARBP4
Packing: 4PCS/PK
Carton: 96 PKS



Model: NH-AA1000ARBP2
Packing: 2PCS/PK
Carton: 96 PKS



Model: NH-AA1000ARBP4
Packing: 4PCS/PK
Carton: 48 PKS



Model: NH-AA2100ARBP2
Packing: 2PCS/PK
Carton: 96 PKS



Model: NH-AA2100ARBP4
Packing: 4PCS/PK
Carton: 48 PKS



Model: NH-C2500ARBP2
Packing: 2PCS/PK
Carton: 48 PKS



Model: NH-D2500ARBP2
Packing: 2PCS/PK
Carton: 48 PKS



Model: NH-9V200ARBP1
Packing: 1PCS/PK
Carton: 96 PKS



Battery Chargers

The Westinghouse Battery Chargers were designed to be safe and easy-to-use. All our battery chargers integrate multiple protective measures to ensure the safety of both you and your batteries.

Charges:

- 1-2 x AA Ni-MH
- 1-2 x AAA Ni-Cd

WBC-0805A

Main Features

- 2 independent charging channels
- Reverse polarity protection
- Timer control protection (12 Hours)
- ΔV cut off
- Easy-to-monitor LED charge indicators



Specifications

Input: DC 5V = 500mA
 Output: 2 x (1.4V = 280mA)
 AA/AAA size



Package Type: Double Blister

Charges:

- 1-4 x AA Ni-MH
- 1-4 x AAA Ni-Cd



WBC-0907

Main Features

- 4 independent charging channels
- 6-Level charge protection
- ΔV cut off
- Timer-control protection
- Over-temperature protection
- Reverse polarity protection
- Over-current and short-circuit protection
- Defective and non-rechargeable battery detection
- Trickle charge
- Worldwide voltage
- Refresh battery memory capability
- Pulse charging technology
- Easy-to-read LCD display

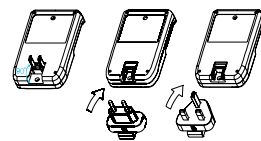
Specifications

AC To DC Adapter
 Input: 100-240V-50/60Hz
 Output: 12V = 1.2A
 Car Adapter Output: 12V =
Charger
 Charging Currents
 4 x (1.4V = 2200mA) AA Size
 4 x (1.4V = 800mA) AAA Size

Package Type: Double Blister

Charges:

- 1-4 x AA Ni-MH
- 1-4 x AAA Ni-Cd



WBC-0905A

Main Features

- 4 independent charging channels
- 5-Level charge protection
- ΔV cut off
- Timer-control protection
- Over-temperature protection
- Reverse polarity protection
- Over-current and short-circuit protection
- Trickle charge
- Switchable plug by plugging the suitable plug type to the charger
- LED charge indicator for each independent channel

Specifications

Input: 100-240V-50/60Hz
 Output: AA: 1000mA (1- 2 pcs),
 500mA (3-4 pcs)
 AAA: 600mA (1- 2 pcs),
 300mA (3-4 pcs)

Package Type: Double Blister

Charges:

- 1-4 x AA Ni-MH
- 1-4 x AAA Ni-Cd



WBC-007F

Main Features

- Four independent charging channels
- Easy-to-monitor LED charge indicators
- Six Level charge protection
- - ΔV cut off
- Timer-control protection
- Reverse polarity protection
- Over-current protection
- Over-temperature protection
- Defective and non-rechargeable battery detection

Specifications

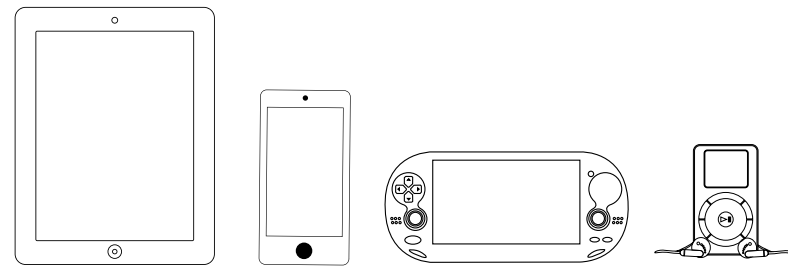
Input: 5V = 2A
 Output: AA: 1.4V = 1.6A (1- 2 pcs), 0.8A (3-4 pcs)
 AAA: 1.4V = 0.8A (1- 2 pcs), 0.4A (3-4 pcs)

Package Type: Double Blister

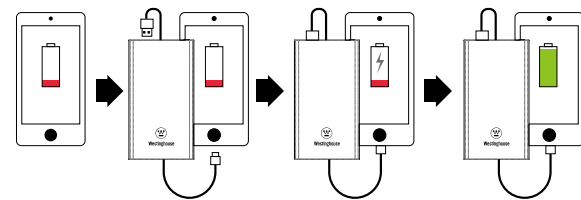


Mobile Power

These Westinghouse portable chargers deliver high-capacity charging for your mobile devices whenever you're on the go. The slim and ergonomic design fits easily in your pocket and bag or just to carry around. With advanced circuitry and built-in safeguards, these units provide four levels of protection.



Recharge your mobile devices anytime, anywhere!



Westinghouse is committed to providing you with products of the highest quality and safety:

- CE and FCC certified
- Built-in protection against



WP09

Main Features

- Dual USB output port
- Short-circuit, overcharge, over-discharge, and over-current protection
- LED battery level indicator
- Slim and ergonomic design

Specifications

Battery: 3.7V, 8000mAh, 29.6Wh, Rechargeable Li-polymer Battery
 Input: 5V \square 2A
 Output: 5V \square 2.1A(Total)
 5V \square 2.1A(Single USB)

Package Type: Color Box



WP10

Main Features

- Dual USB output port
- Short-circuit, overcharge, over-discharge, and over-current protection
- LED battery level indicator
- Slim and ergonomic design

Specifications

Battery: 3.7V, 10000mAh, 37Wh, Rechargeable Li-polymer Battery
 Input: 5V \square 2A
 Output: 5V \square 2.1A(Total)
 5V \square 2.1A(Single USB)

Package Type: Color Box



WP13

Main Features

- Supports quick charge
- Output with USB port or type-C port
- Charge with Micro USB port or type-C port
- Short-circuit, overcharge, over-discharge, and over-current protection
- LED battery level indicator
- Slim and ergonomic design

Specifications

Battery: 3.7V, 10000mAh, 37Wh, Rechargeable Li-polymer Battery
 Input: Micro USB: 5V/2A 9V/2A 12V/1.5A
 Type-C: 5V/2.4A 9V/2A 12V/1.5A
 Output: USB A: 5V/3A 9V/2A 12V/1.5A QC3.0
 Type-C: 5V/3A 9V/2A 12V/1.5A PD2.0

Package Type: Color Box





Portable Lighting

Westinghouse Portable Lighting provides you with a series of work lights, flashlights, search lights, pen lights, sensor lights and head lights designed for your needs. Powered by LEDs, the Westinghouse Portable Lighting series offers outstanding illumination and long-lasting performance.

Work Lights



Flashlights



Search Lights



Pen Lights



Sensor Lights



Head Lights



Westinghouse is committed to providing you with products of the highest quality and safety

Work Lights

WF57

Main Features

- Powerful COB - up to 750Lm
- Long-lasting COB
- Three light settings: High / Low / Strobe
- 180°Rotatable bracket for convenient use and lighting angles
- Universal DC 5V USB charging

Specifications

Power Source: 3.7V 4400mAh 18650 Li-ion
 Input: Micro USB 5V \equiv 1A
 Charging Time: 6H (approx)
 Output: 5V \equiv 1A
 Light Source: 10W COB
 Light Settings: High / Low / Strobe
 Lumen Output: High 750Lm / Low 220Lm
 Running Time: High 3 hrs / Low 10 hrs
 Dimensions: 172 x 127 x 46 mm
 6.77 x 5 x 1.81 inches
 Weight: 470 \pm 5g
 1.04 \pm 0.01lb
 Ingress Protection: IPX4

Package Type: Color Box



WF60

Main Features

- Ultra bright 300 lumens COB lighting
- Long lifespan 5W COB lighting
- Three light settings: White / Red / Red Strobe
- Adjustable brightness dial
- Adjustable swivel base with very strong magnet
- Rechargeable with Micro USB

Specifications

Power Source: 3.7V 1800mAh 18650 Li-ion
 Light Source: 5W COB
 Input: 5V \equiv 1A
 Lumen Output: 300Lm White, 10Lm Red
 Charging Time: 4-5 hrs
 Run Time: 2-8 hrs
 Dimensions: 375 x 38.5 x 32 mm
 14.76 x 1.52 x 1.26 inches
 Weight: 155 \pm 5g
 0.34 \pm 0.01 lb

Package Type: Color Box





WF1530

Main Features

- Powerful 3W COB LED
- LED lighting - long-lasting performance
- Up to 200 lumens
- Adjustable stand with a strong magnet

Specifications

Power Source: 4 x AAA batteries
 Light Source: 3W COB LED
 Lumen Output: 200Lm
 Run Time: 3 hrs
 Dimensions: 91 x 35 x 128 mm
 3.58 x 1.38 x 5.04 inches
 Weight: 100 ± 5g
 0.22 ± 0.01 lb

Package Type: Blister / PDQ



Flashlights

WF1501

Main Features

- Shock-resistant from up to 3 meters high
- Weatherproof
- Compact
- Lanyard included

Specifications

Power Source: 3 x AAA batteries
 Light Source: 8mm straw hat LED
 Lumen Output: 90Lm
 Run Time: 8 hrs
 Dimensions: Φ39 x 105 mm
 Φ1.54 x 4.13 inches
 Weight: 54 ± 5g
 0.12 ± 0.01 lb

Package Type: Blister



* Ultra durable TPE body



WF1502

Main Features

- Shock-resistant from up to 2 meters high
- Weatherproof
- Foldable tail hook included
- Three light settings
- Lanyard included

Specifications

Power Source: 4 x AAA batteries
 Light Source: 3W LED
 Light Settings: High / Low / Red Flashing
 Lumen Output: High 120Lm / Low 60Lm
 Run Time: 5 hrs / 12 hrs
 Dimensions: Φ53.5 x 170 mm
 Φ2.11 x 6.69 inches
 Weight: 118 ± 5g
 0.26 ± 0.01 lb

Package Type: Blister



* Ultra durable TPE body



WF61

Main Features

- Small and easy to carry
- Equipped with a magnet and a carabiner
- Three light settings
- Durable COB lighting

Specifications

Power Source: 2 x CR2032 batteries
 Light Source: 1W COB
 Light Settings: High / Low / Flashing
 Lumen Output: 30Lm Max
 Run Time: Up to 2.5 hrs
 Dimensions: 73 x 34 x 23.5 mm
 2.87 x 1.34 x 0.93 inches
 Weight: 26 ± 5g
 0.06 ± 0.01 lb

Package Type: Candy Jar



Sensor Lights

WF66

Main Features

- Compact
- Detachable base for easy mounting
- Sensor distance up to 4 meters
- 20-Lumens for soft down-light effect

Specifications

Power Source: 3 x AAA size batteries
 Light Source: 2 x SMD2835
 Lumen Output: 20Lm
 Sensor Distance: 4 meters
 Dimensions: 120 x 45 x 30 mm
 4.72 x 1.77 x 1.18 inches
 Weight: 56 ± 5g
 0.12 ± 0.01 lb

Package Type: Blister



WF63

Main Features

- Equipped with a magnet and a hook
- Super Bright COB LED
- Heavy duty rubberized ABS casing

Specifications

Power Source: 3 x AA size battery
 Light Source: 3W COB
 Lumen Output: 200Lm Max
 Run Time: Up to 4.5 hrs
 Dimensions: 200 x 62 x 34 mm
 7.87 x 2.44 x 0.93 inches
 Weight: 105 ± 5g
 0.23 ± 0.01 lb

Package Type: Blister / PDQ





Pen Lights



Advanced long life incandescent bulb



WF1526

Main Features

- Aluminum alloy body
- Pocket-size with plastic clip
- Specially designed incandescent bulb ensures highest color rendering index

Specifications

Power Source: 2 x AAA size batteries
 Light Source: 2.2V, 250mA vacuum bulb
 Lumen Output: 5Lm
 Run Time: 2.5 hrs
 Dimensions: $\Phi 13 \times 138$ mm
 $\Phi 0.51 \times 5.43$ inches
 Weight: 15 ± 2 g
 0.06 ± 0.004 lb

Package Type: Blister



Long life LED bulb



WF1526L

Main Features

- Aluminum alloy body
- Pocket-size with plastic clip
- LED lifespan of 50,000 hours

Specifications

Power Source: 2 x AAA size batteries
 Light Source: 3V, 0.2W LED
 Lumen Output: 15Lm
 Run Time: 20 hrs
 Dimensions: $\Phi 13 \times 138$ mm
 $\Phi 0.51 \times 5.43$ inches
 Weight: 15 ± 2 g
 0.06 ± 0.004 lb

Package Type: Blister

Head Lights



WF71

Main Features

- Wave sensor with sensory distance of 5cm
- Rechargeable with DC 5V USB
- Two light settings: white and red
- Adjustable light angle

Specifications

Power Source: 600mAh Rechargeable Li-polymer Battery
 Input: 5V $\bar{\text{---}}$ 500mA
 Light Source: 1 x XPE LED + 2 x Red LED
 Light Settings: White / Red
 Lumen Output: White 80Lm / Red 10Lm *
 Run Time: White 2H / Red 12H *
 Dimensions: $60 \times 45 \times 34$ mm
 $2.36 \times 1.77 \times 1.34$ inches
 Weight: 57 ± 5 g, 0.13 ± 0.01 lb
 Protection: IP44

Package Type: Blister

* 2019 lab tests. Data is based on a full charge cycle of the battery



WF79

Main Features

- Super Bright XBD 3W LED
- Dual switch
- Four light settings
- Adjustable light angle

Specifications

Power Source: 2 x AAA size batteries
 Light Source: 1PC CREE XBD LED + 2PCS COB LED
 Light Settings: CREE LED: White LED high-low-off
 COB LED: White COB on-red COB strobe-off
 Lumen Output: White 100Lm / Red 10Lm
 Run time: White 2 hrs / Red 18 hrs (approx)
 Dimensions: $64 \times 37 \times 33.5$ mm
 $2.52 \times 1.46 \times 1.33$ inches
 Weight: 47 ± 5 g
 0.28 ± 0.02 lb

Package Type: Blister

Search Lights



WF1531

Main Features

- 3W high power LED and dual-color COB
- 2-in-1 multi-function lighting
- Five different light settings (Low Beam / High Beam / White Light / Red Light / Red Strobe)
- Two-position side handle with a folding tail handle

Specifications

Power Source: 3x AA size battery
 Light Source: 3W White LED + 3W Dual-color COB
 LED Light Settings: Low Beam / High Beam
 COB Light Settings: White Light / Red Light / Red Strobe
 LED Lumen Output: High 230Lm / Low 160Lm
 COB Lumen Output: White 150Lm
 LED Run Time: High 4 hrs / Low 6 hrs
 COB Run Time: White 6 hrs
 Dimensions: $174 \times 98 \times 139$ mm
 $6.85 \times 3.86 \times 5.47$ inches
 Weight: 325 ± 5 g, 0.72 ± 0.02 lb
 Ingress Protection: IPX4

Package Type: Color Box



WF1503

Main Features

- Adjustable handle with two positions
- Very bright with a long beam distance
- Long continuous lighting
- Two light settings: High Beam / Low Beam

Specifications

Power Source: 4 x C batteries
 Light Source: CREE XP-G2, 5W LED
 Light Settings: High / Low
 Lumen Output: High 360Lm / Low 140Lm
 Run Time: 9 hrs / 20 hrs
 Dimensions: $\Phi 120 \times 182$ mm
 $\Phi 4.72 \times 7.17$ inches

Weight: 120 ± 5 g, 0.26 ± 0.01 lb
Ingress Protection: IP44

Package Type: Color Box



WF1536

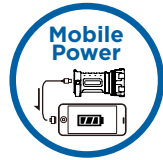
Main Features

- 1000 recharge cycles
- 3-in-1 Spotlight , Area Light and Portable charger
- Detachable amber lamp shade
- Equipped with a handle, hanger and retractable tripod stand.

Specifications

Power Source: Li-ion 18650, 3.7V, 2400mAh
 Input: DC5V \approx 500mA
 Output: DC5V \approx 1A Max
 Charging Time: 6 hrs (approx)
 Light Source: 10W CREE XM-L2 LED + 3W COB
 Lumen Output: Spotlight 850Lm / COB 110Lm
 Light Settings: Spotlight / COB Light / COB Strobe
 Run Time: Spotlight 2 hrs / COB Light 5 hrs/ COB Strobe 15 hrs
 Dimensions: 208 x 122 x 240 mm
 8.19 x 4.8 x 9.45 inches
 Weight: 675 \pm 10g
 1.49 \pm 0.02 lb
 Ingress Protection: IP44

Package Type: Color Box



WF1504

Main Features

- 1000 recharge cycles
- 2-in-1 search light and lantern
- Adjustable handle with two positions and a hook

Specifications

Power source: Lithium-ion 18650, 3.7V, 2200mAh
 Input: DC5V \approx 500mA
 Charging Time: 6 hrs
 Light Source: 3W LED + 24LED
 Light Settings: Search Lamp / Lantern
 Lumen Output: Search Lamp 200Lm / Lantern 90Lm
 Run Time: 4 hrs / 9 hrs
 Dimensions: Φ 122 x 201 mm
 Φ 4.8 x 7.91 inches
 Weight: 435 \pm 5g
 0.96 \pm 0.01 lb

Package Type: Color Box



WF1505

Main Features

- 1000 recharge cycles
- Three different light settings (High, Low, Strobe)
- Adjustable handle with 2 position and a swivel stand

Specifications

Power Source: Lithium-ion 18650, 3.7V, 4400mAh
 Input: DC5V \approx 1A
 Charging Time: 6 hrs
 Light Source: CREE XP-G, 5W LED
 Light Settings: High Beam / Low Beam / Flashing
 Lumen Output: High 360Lm / Low 140Lm
 Run Time: High 6 hrs / Low 18 hrs
 Dimensions: Φ 119 x 189 mm
 Φ 4.69 x 7.44 inches
 Weight: 535 \pm 5g
 1.18 \pm 0.01 lb

Package Type: Color Box



WF1537

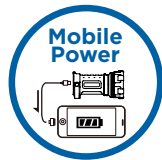
Main Features

- 1000 recharge cycles
- 3-in-1 Spotlight , Floodlight and Portable Charger
- Three light settings: Spotlight / Floodlight / Amber Strobe
- Equipped with a hanger, swivel head and magnet

Specifications

Power Source: Li-ion 18650, 3.7V, 2400mAh
 Input: DC5V \approx 500mA
 Output: DC5V \approx 1A Max
 Charging Time: 6 hrs (approx)
 Light Source: 10W CREE XM-L2 LED + 30x 3528 SMD LED
 Light Settings: Spotlight / Floodlight / Amber Strobe
 Lumen Output: Spotlight 700Lm / COB 100Lm
 Run Time: Spotlight 2 hrs / Floodlight 7 hrs / Amber Strobe 15 hrs
 Dimensions: 147 x 166 x 220 mm
 5.79 x 6.54 x 8.66 inches
 Weight: 700 \pm 10g
 1.54 \pm 0.02 lb
 Ingress Protection: IP44

Package Type: Color Box



WF1506

Main Features

- 1000 recharge cycles
- Two handle positions with a swivel stand
- Three different light settings (High, Low, Strobe)

Specifications

Power Source: Li-ion 18650, 3.7V, 4400mAh
 Input: DC5V \approx 1A
 Light Source: CREE XM-L2, 10W LED (X 1)
 Light Settings: High Beam / Low Beam/ Strobe
 Lumen Output: High 850Lm / Low 280Lm
 Beam Distance: High 450M / Low 250M
 Run Time: High 3 hrs / Low 9 hrs / Strobe 120 hrs
 Accessories: USB charging cable L=1.2M
 Dimensions: 226 x 165 x 179 mm
 8.9 x 6.5 x 7.05 inches
 Weight: 800 \pm 5g
 1.76 \pm 0.01 lb
 Ingress Protection: IP44

Package Type: Color Box





Type	Blister	Inner Box		Shipping Carton		G.W. KG / lb	Volume cbm / cft
	W x L x H	Blister	W x L x H	Blister	W x L x H		
	mm/Inch	packs	cm/Inch	packs	cm/Inch		
Mobile Power							
WP09	110*215*20 / 4.33*8.46*0.79	12	39.5*14*13 / 15.55*5.51*5.12	48	41.2*30*29 / 16.22*11.81*11.42	12.8 / 28.22	0.0358 / 1.2643
WP10	110*215*19 / 4.33*8.46*0.75	12	38.8*13.5*12.2 / 15.28*5.31*4.8	48	40.5*28.5*26.5 / 15.94*11.22*10.43	13.5 / 29.77	0.0306 / 1.0806
WP13	110*215*19 / 4.33*8.46*0.75	12	38.8*13.5*12.2 / 15.28*5.31*4.8	48	40.5*28.5*26.5 / 15.94*11.22*10.43	12.5 / 27.56	0.0306 / 1.0806
Lighting							
WF57	180*126*40 / 7.09*4.96*1.57	/	/	24	38*27*27 / 14.96*10.63*10.63	12 / 26.46	0.0277 / 0.9782
WF1501	110*190*40.5 / 4.33*7.48*1.59	/	/	48	47*40.5*21.5 / 18.5*15.94*8.46	7.9 / 17.42	0.0409 / 1.4444
WF1502	262*137*63 / 10.31*5.39*2.48	/	/	48	58.5*48*28.8 / 23.03*18.9*11.34	5.8 / 12.79	0.0809 / 2.857
WF1526	206*101*20.4 / 8.11*3.98*0.8	10	22*15.5*11.5 / 8.66*6.1*4.53	100	48.5*39*25 / 19.09*15.35*9.84	7.1 / 15.66	0.0473 / 1.6704
WF1526L	206*101*20.4 / 8.11*3.98*0.8	10	22*15.5*11.5 / 8.66*6.1*4.53	100	48.5*39*25 / 19.09*15.35*9.84	7.1 / 15.66	0.0473 / 1.6704
WF1503	18.7*12.4*17 / 0.74*0.49*0.67	/	/	12	40*39.5*37.5 / 15.75*15.55*14.76	5.9 / 13.01	0.0593 / 2.0942
WF1504	20.5*12.8*16.3 / 0.81*0.5*0.64	/	/	12	43.5*41*36 / 17.13*16.14*14.17	7.7 / 16.98	0.0642 / 2.2672
WF1505	20.5*12.8*16.3 / 0.81*0.5*0.64	/	/	12	43.5*41*36 / 17.13*16.14*14.17	8.9 / 19.62	0.0642 / 2.2672
WF1506	24.5*18*19.9 / 0.96*0.71*0.78	/	/	12	55.5*50.5*41.8 / 21.85*19.88*16.46	12 / 26.46	0.1172 / 4.1389
WF1530	137*210*36 / 5.39*8.27*1.42	/	/	48	49*32.5*32.5 / 19.29*12.8*12.8	8 / 17.64	0.0518 / 1.8293
WF1531	185*105*148 / 7.28*4.13*5.83	/	/	6	39*33.5*17 / 15.35*13.19*6.69	3.1 / 6.84	0.0222 / 0.784
WF1536	237*127*219 / 9.33*5*8.62	/	/	12	49*39.6*45.8 / 19.29*15.59*18.03	10.9 / 24.03	0.0889 / 3.1395
WF1537	166*152*262 / 6.54*5.98*10.31	/	/	12	47*34.7*54.5 / 18.5*13.66*21.46	11.2 / 24.7	0.0889 / 3.1395